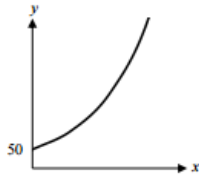


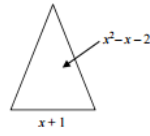
### Monday, September 12



Every year, the population of Dwarf lop rabbits doubles in a certain country, as shown in the graph above. If there were 50 Dwarf lop rabbits last year, how many Dwarf lop rabbits will there be 4 years from now?

- A) 200
- B) 250
- C) 800
- D) 1600

### Friday, September 16



The triangle above has an area of  $x^2 - x - 2$  and a base of  $x + 1$ . What is the height of the triangle?

- A)  $\frac{1}{2}(x-2)$
- B)  $x-2$
- C)  $2(x-2)$
- D)  $(x-2)(x+1)^2$

### Tuesday, September 13

Which of the following represents the solution set to the inequality  $2x + 1 \geq 9$ ?

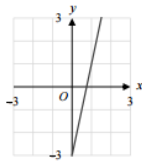
- A)
- B)
- C)
- D)

### Wednesday, September 14

$f(x) = 2x - 1$ , and  $g(x)$  is a linear function that is perpendicular to  $f(x)$ . If  $(0, 4)$  is a point of  $g(x)$ , at what point do  $f(x)$  and  $g(x)$  intersect?

- A)  $(0, -1)$
- B)  $(1, 1)$
- C)  $(2, 3)$
- D)  $(3, 2)$

### Thursday, September 15



The graph shown above represents  $f(x) = 4x - 3$ . If  $f(a + 4) = 5$ , what is the value of  $a$ ?

- A) -2
- B) -1
- C) 1
- D) 4