

Monday

Explain the difference between a convergent or a divergent series. Include how to identify this information in your explanation.

Tuesday

Multiple Choice: Let $f(x) = 2x^3 + 7x^2 + 2x - 3$. Which of the following is NOT a possible rational root of f ?

- A. -3 B. -1 C. 1 D. $1/2$ E. $2/3$

Wednesday

Multiple Choice: Let f be a polynomial function with $f(3) = 0$. Which of the following statements is NOT true?

- A. $x + 3$ is a factor of $f(x)$.
B. $x - 3$ is a factor of $f(x)$.
C. $x = 3$ is a zero of $f(x)$.
D. 3 is an x intercept of $f(x)$.
E. The remainder when $f(x)$ is divided by $x - 3$ is zero.

Thursday

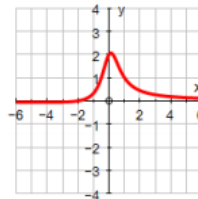
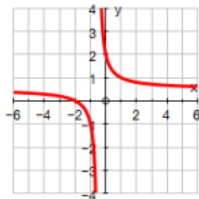
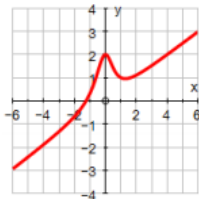
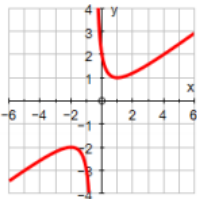
Match the function with the corresponding graph by considering end behavior and asymptotes.

1. $f(x) = \frac{x+2}{2x+1}$

2. $f(x) = \frac{x^2+2}{2x+1}$

3. $f(x) = \frac{x+2}{2x^2+1}$

4. $f(x) = \frac{x^3+2}{2x^2+1}$



Friday

7. The skateboard ramp at the right is called a quarter pipe. The curved surface is determined by the radius of a circle. Find the length of the curved part of the ramp.

